

## ILLUSTRATED PARTS LIST

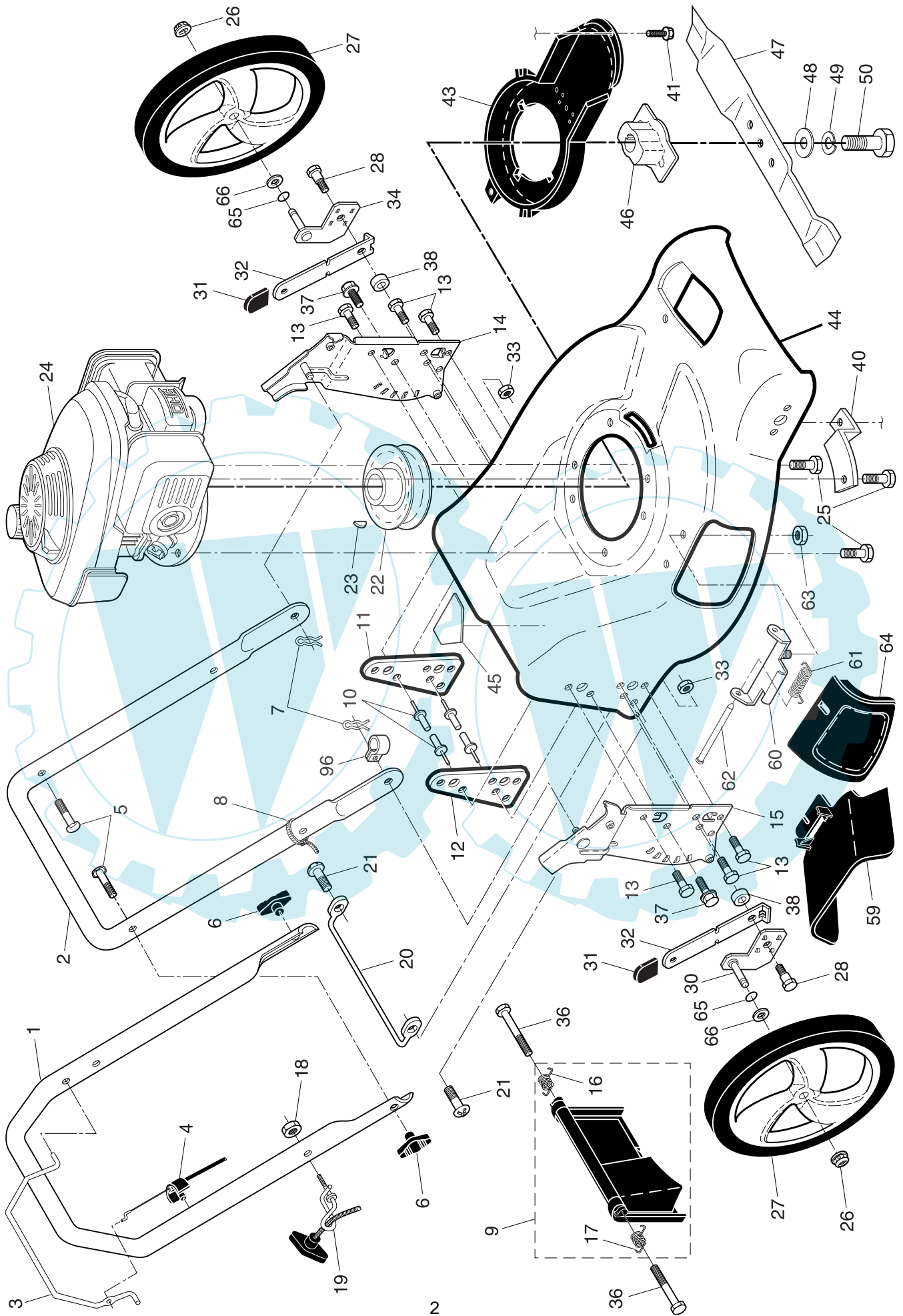
**MODEL NUMBER P5553D**

**PRODUCT NUMBER 961 41 00-69**

**MFG. ID. NUMBER 96141006900**



ROTARY LAWN MOWER -- MODEL NUMBER **P5553D** (96141006900) PRODUCT NUMBER 961 41 00-69

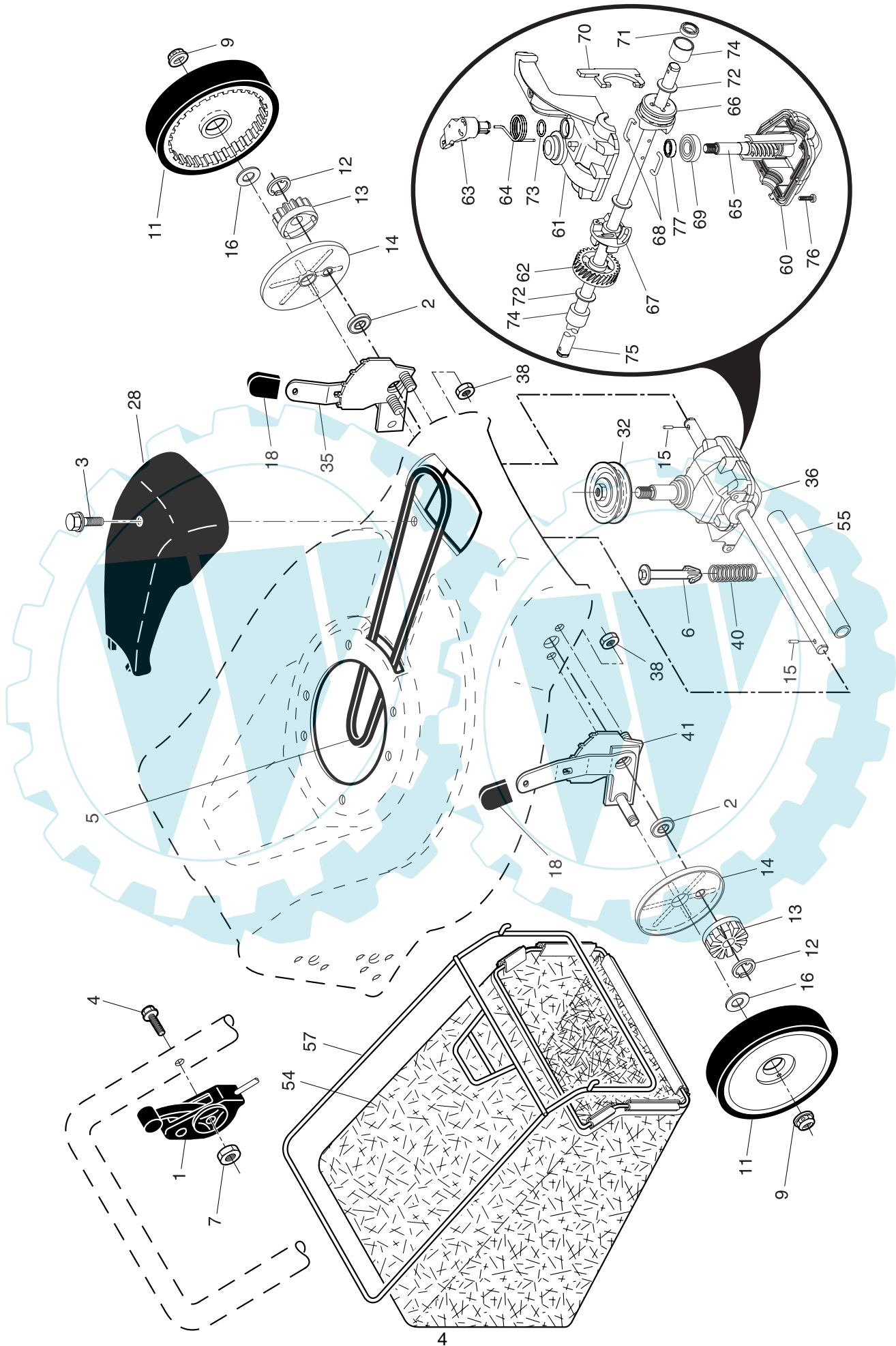


**ROTARY LAWN MOWER - - MODEL NUMBER P5553D (96141006900) PRODUCT NUMBER 961 41 00-69**

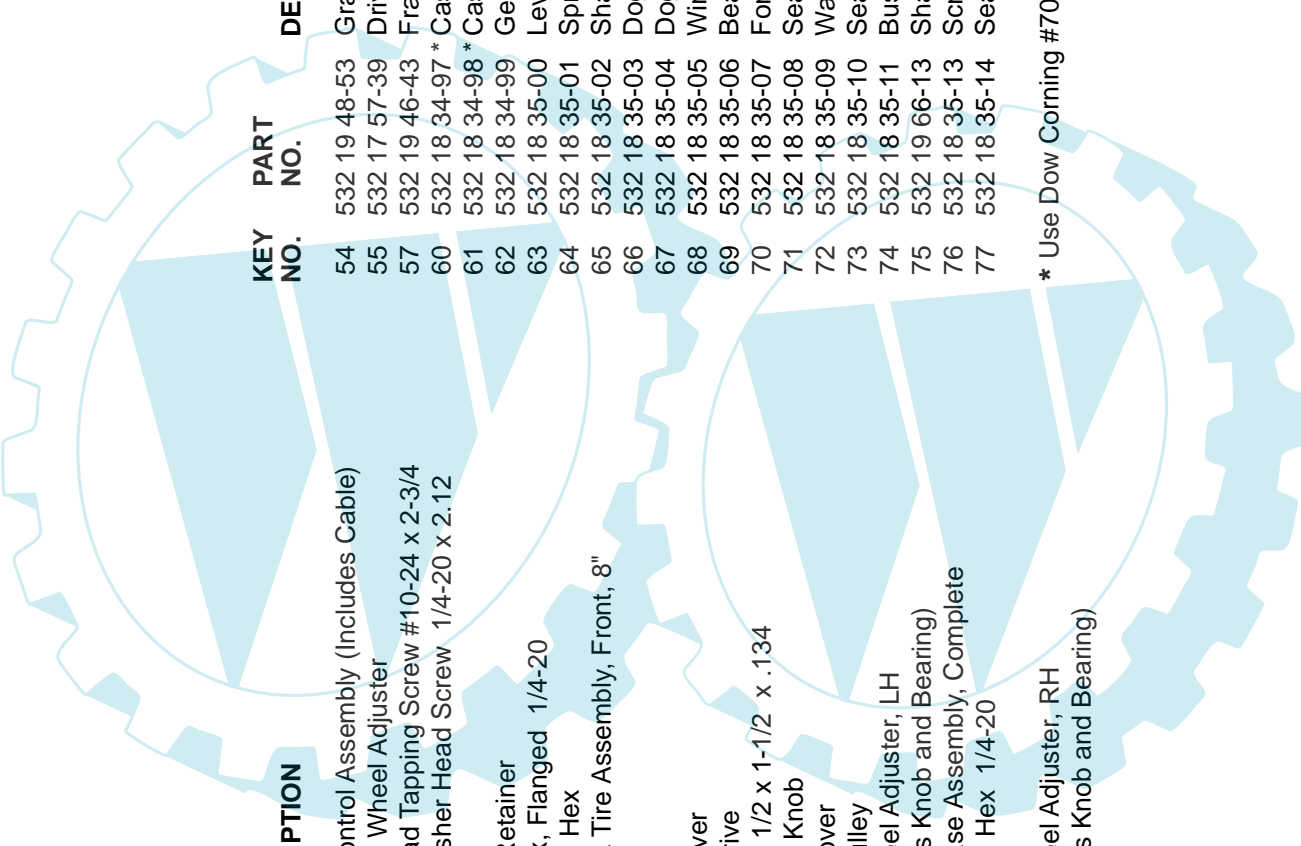
| KEY NO. | PART NO.     | DESCRIPTION  | KEY NO. | PART NO.     | DESCRIPTION  |
|---------|--------------|--|---------|--------------|--|
| 1       | 532 40 29-37 | Upper Handle   | 31      | 532 08 78-77 | Selector Knob  |
| 2       | 532 15 36-05 | Lower Handle   | 32      | 532 19 01-57 | Selector Spring  |
| 3       | 532 18 99-03 | Control Bar  | 33      | 873 80 05-00 | Nut, Hex 5/16-18   |
| 4       | 532 18 35-67 | Engine Zone Control Cable  | 34      | 532 40 25-72 | Axle Arm Assembly, Rear, LH                                    |
| 5       | 532 19 15-74 | Handle Bolt  | 36      | 532 18 41-93 | Bolt   |
| 6       | 532 19 19-38 | Handle Knob  | 37      | 532 15 00-78 | Thread Cutting Screw w/Sems 5/16-18 x 3/4                      |
| 7       | 532 05 17-93 | Hairpin Cotter   | 38      | 819 11 22-06 | Spacer   |
| 8       | 532 06 64-26 | Wire Tie   | 41      | 532 19 23-25 | Screw, Debris Shield   |
| 9       | 532 18 04-79 | Rear Door Kit (Includes Key Numbers 16 and 17)                               | 43      | 532 18 87-84 | Debris Shield  |
| 10      | 532 12 84-15 | Pop Rivet  | 44      | 532 40 07-33 | Lawn Mower Housing<br>(Includes Key Numbers 10, 11, 12 and 45) |
| 11      | 532 18 25-38 | Support Bracket, LH  | 45      | 532 18 21-66 | Danger Decal   |
| 12      | 532 18 25-39 | Support Bracket, RH  | 46      | 532 18 46-32 | Blade Adapter  |
| 13      | 817 06 04-10 | Screw 1/4-20 x 5/8   | 47      | 532 19 93-77 | Blade, 21"   |
| 14      | 532 18 25-43 | Handle Bracket Assembly, LH  | 48      | 532 85 10-74 | Hardened Washer  |
| 15      | 532 18 25-45 | Handle Bracket Assembly, RH  | 49      | 532 85 02-63 | Helical Washer 3/8-24 x 1-3/8 Grade 8                          |
| 16      | 532 18 00-71 | Spring, Rear Door, LH  | 50      | 532 85 10-84 | Hex Head Machine Screw 3/8-24 x 1-3/8 Grade 8                  |
| 17      | 532 18 00-72 | Spring, Rear Door, RH  | 59      | 532 17 50-71 | Discharge Deflector  |
| 18      | 532 13 20-04 | Locknut, Hex 1/4-20  | 60      | 532 17 57-35 | Hinge Bracket Assembly   |
| 19      | 532 19 47-88 | Rope Guide   | 61      | 532 19 30-00 | Spring, Hinge  |
| 20      | 532 17 92-05 | Foot Guard, C.E.   | 62      | 532 17 56-50 | Rod, Hinge   |
| 21      | 532 05 45-83 | Screw, Tapping 1/4-20 x 1/2  | 63      | 873 80 04-00 | Locknut, Hex 1/4-20  |
| 22      | 532 18 49-41 | Engine Pulley  | 64      | 532 17 50-66 | Mulcher Door   |
| 23      | 532 18 77-23 | Hi-Pro Key   | 65      | 532 19 74-80 | O-Ring   |
| 24      | ---          | Engine, Honda, Model Number GCV160<br>(order parts from engine manufacturer) | 66      | 532 08 83-48 | Washer, Flat   |
| 25      | 532 15 04-06 | Hex Head Thread Rolling Screw 3/8-16 x 1-1/8                                 | 68      | 532 19 36-96 | Bushing, Nylon, Black  |
| 26      | 532 14 52-12 | Hex Flange Nut   | 96      | 532 19 27-70 | Clip, Cable  |
| 27      | 532 40 29-35 | Wheel & Tire Assembly, Rear, 12"   | --      | 532 18 21-34 | Decal, Self-Propelled, Internal (not shown)                    |
| 28      | 532 16 08-28 | Shoulder Bolt 5/16-18 x .33  | --      | 532 40 03-92 | Operator's Manual, European                                    |
| 29      | 532 19 09-39 | Mounting Bracket, Debris Shield  | --      | 532 40 03-94 | Operator's Manual, Scandinavian                                |
| 30      | 532 40 25-71 | Axle Arm Assembly, Rear, RH  | --      | 532 40 03-96 | Operator's Manual, Baltic                                      |
|         |              |  | --      | 532 40 03-97 | Operator's Manual, East Bloc                                   |

**NOTE:** All component dimensions given in U.S. inches. 1 inch = 25.4 mm. **IMPORTANT:** Use only Original Equipment Manufacturer (O.E.M.) replacement parts. Failure to do so could be hazardous, damage your lawn mower and void your warranty.

ROTARY LAWN MOWER -- MODEL NUMBER **P5553D** (96141006900) PRODUCT NUMBER 961 41 00-69



**ROTARY LAWN MOWER -- MODEL NUMBER P5553D (96141006900) PRODUCT NUMBER 961 41 00-69**



| KEY NO. | PART NO.     | DESCRIPTION  | KEY NO. | PART NO.       | DESCRIPTION        |
|---------|--------------|--|---------|----------------|--------------------|
| 1       | 532 18 45-87 | Drive Control Assembly (Includes Cable)                | 54      | 532 19 48-53   | Grassbag Assembly  |
| 2       | 532 16 73-87 | Bearing, Wheel Adjuster                                | 55      | 532 17 57-39   | Driveshaft Cover   |
| 3       | 532 17 52-62 | Pan Head Tapping Screw #10-24 x 2-3/4                  | 57      | 532 19 46-43   | Frame, Grassbag    |
| 4       | 532 15 87-55 | Hex Washer Head Screw 1/4-20 x 2.12                    | 60      | 532 18 34-97 * | Case, Lower        |
| 5       | 532 17 54-36 | V-Belt   | 61      | 532 18 34-98 * | Case, Upper        |
| 6       | 532 15 04-95 | Spring Retainer  | 62      | 532 18 34-99   | Gear, 27 Teeth     |
| 7       | 532 19 17-30 | Nut, Hex, Flanged 1/4-20                               | 63      | 532 18 35-00   | Lever, Clutch      |
| 9       | 532 08 39-23 | Locknut, Hex   | 64      | 532 18 35-01   | Spring, Return     |
| 11      | 532 40 29-36 | Wheel & Tire Assembly, Front, 8"                       | 65      | 532 18 35-02   | Shaft, Input       |
| 12      | 812 00 00-58 | E-Ring   | 66      | 532 18 35-03   | Dog, Movable       |
| 13      | 532 75 00-03 | Pinion   | 67      | 532 18 35-04   | Dog, Fixed         |
| 14      | 532 18 94-03 | Dust Cover   | 68      | 532 18 35-05   | Wire, Formed       |
| 15      | 532 19 10-17 | Pawl, Drive  | 69      | 532 18 35-06   | Bearing, Ball      |
| 16      | 532 06 77-25 | Washer 1/2 x 1-1/2 x .134                              | 70      | 532 18 35-07   | Fork, Shift        |
| 18      | 532 08 78-77 | Selector Knob  | 71      | 532 18 35-08   | Seal, Output Shaft |
| 28      | 532 18 14-67 | Drive Cover  | 72      | 532 18 35-09   | Washer             |
| 32      | 532 19 41-26 | Drive Pulley   | 73      | 532 18 35-10   | Seal, Case         |
| 35      | 532 19 51-10 | Kit, Wheel Adjuster, LH<br>(Includes Knob and Bearing) | 74      | 532 18 35-11   | Bushing            |
| 36      | 532 19 49-35 | Gear Case Assembly, Complete                           | 75      | 532 19 66-13   | Shaft, Output      |
| 38      | 873 80 04-00 | Locknut, Hex 1/4-20                                    | 76      | 532 18 35-13   | Screw              |
| 40      | 532 13 70-90 | Spring   | 77      | 532 18 35-14   | Seal, Input Shaft  |
| 41      | 532 19 51-07 | Kit, Wheel Adjuster, RH<br>(Includes Knob and Bearing) |         |                |                    |

\* Use Dow Corning #709 to reseal Gear Case Halves.

**NOTE:** All component dimensions given in U.S. inches. 1 inch = 25.4 mm. **IMPORTANT:** Use only Original Equipment Manufacturer (O.E.M.) replacement parts. Failure to do so could be hazardous, damage your lawn mower and void your warranty.